

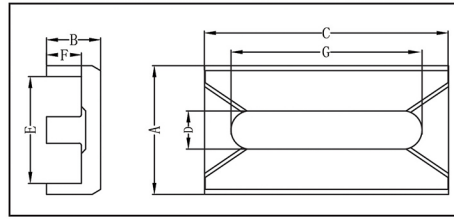
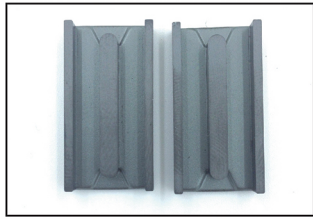
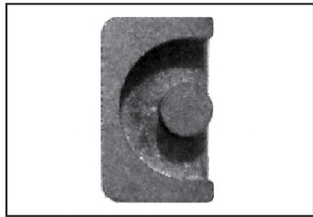
**EDR CORE**

FIG.1

TYPE	FIG.	Dimensions(mm)					
		A	B	C	D	E	F
EDR2009	1	13.5±0.3	4.6±0.2	20.2±0.3	2.7±0.2	10.4min	2.9±0.2
EDR2509	1	12.8±0.2	4.65±0.2	25.3±0.5	2.7±0.2	9.5min	3.3+0.2/-0
EDR2609	1	13.5±0.3	4.6±0.2	26.0±0.5	2.7±0.2	10.4min	2.7±0.2
EDR2810	2	13.5±0.3	5.0±0.2	28.0±0.5	3.2±0.2	10.0min	3.4±0.2
EDR3909	3	13.5±0.3	4.5±0.2	39.4±0.2	2.7±0.2	10.4min	2.8±0.2
EDR4109	2	12.6±0.4	4.4±0.2	40.2±0.3	2.7±0.2	9.4min	3.1±0.2

**EP CORE**

TYPE	FIG.	Dimensions(mm)					
		A	B	C	D	E	F
EP6	1	6.0±0.15	3.1±0.1	3.8±0.1	1.7±0.1	4.575±0.125	2.325±0.125
EP7	1	9.2±0.2	3.7±0.2	6.4±0.2	3.3±0.1	7.2min	2.7±0.2
EP10	1	11.5±0.3	5.1±0.2	7.7±0.2	3.3±0.2	9.4±0.3	3.8±0.2
EP13	1	12.5±0.3	6.5±0.3	8.8±0.2	4.4±0.2	10.0±0.3	4.5+0.4/-0
EP17	1	18.1±0.4	8.4±0.2	11.3+0/-0.6	5.9+0/-0.4	12.0±0.4	5.5+0.4/-0
EP20	1	24.0±0.5	10.7±0.2	15.0±0.4	8.8±0.3	16.5±0.4	7.2±0.2

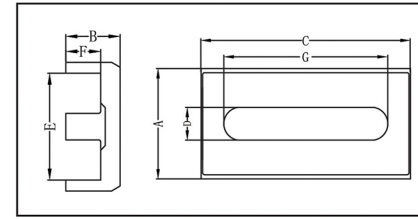
**EDR CORE**

FIG.2

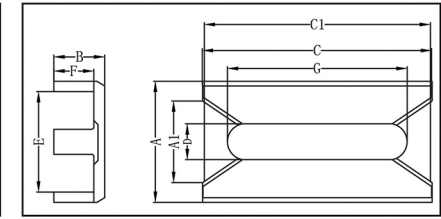


FIG.3

G	Cl	Ae	Le	Ve	AL±25%(nH/N²)			Weight
					FW40	FW44	FW95	
15.75±0.3		56.30	20.60	1159.4			4000	6.25
21.6±0.3		78.30	24.40	1890.1			6000	9.60
21.75±0.3		71.02	23.62	1677.8			6500	9.10
25.3±0.3		77.08	26.70	2060.1			6500	10.40
35.0±0.2		102.31	24.80	2537.5			7500	13.30
34.3±0.2	0.28	90.20	26.85	2552.9	650			12.50

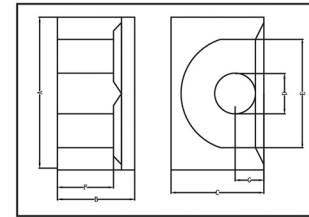
**EP CORE**

FIG.1

Cl	Ae	Le	Ve	AL±25%(nH/N²)						Weight
				FW40	FW44	FW95	FW5K	FW7K	FW10K	
3.87	2.99	11.58	34.60	330	340	370				0.44
1.44	10.29	14.78	152.09	960	1000	1130	1350	2000	2900min	2.10
1.68	11.00	18.48	203.21	800	800	900	1700	1900	4000min	2.90
1.18	19.72	23.20	457.40	1200	1300	1500	2600	3000	4900min	5.20
0.8	33.60	26.76	898.96	1900	1900	2300	4300	4900	7350min	12.40
0.48	78.87	37.55	2961.33	3600	3700	4600	7100	8200	11900min	33.00